

User guide

Super Stroller® walking frame

Code: 1846



Contents

1	Definitions	2	Product labels	6	Limited warranty
1	Intended use	3	List of components		
1	Safety warnings	3	Instructions for use		
2	Product specifications	5	Care and maintenance		

Definitions

Symbols used in this user guide and their meanings.



WARNING! Failure to heed this warning may result in damage to the product or serious injury to the operator/user.



CAUTION! Beware of pinch points.



ATTENTION! Read and understand the instructions in the user guide before using the product.

Intended use

The Super Stroller walking frame is designed for individuals who, due to a wide variety of reasons, require additional support while walking. It should be used as a tool to assist people who have mobility difficulties with standing, walking, or sitting independently. It is designed exclusively for indoor use on solid, level surfaces and for persons with a maximum body weight of 127kg.

SAFETY WARNINGS



ATTENTION! This user manual must be read before using the walking frame. Severe injury or death may result if user instructions, maintenance instructions and product warnings are not followed.

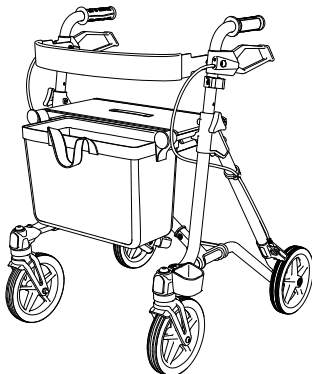


WARNING! The decision to use this walking frame should always be guided by a qualified Health Care Professional, who can also advise and assist with the correct height adjustment and usage instruction.



CAUTION! Fingers or other body parts can be trapped between the walking frame's folding mechanism during operation. Be extremely careful when adjusting the walking frame. Observe the dimensions of gaps between the walking frame's elements to avoid trapping your fingers or other body parts.

- **DO NOT** exceed the maximum weight capacity (including basket contents) or serious injury could result: **Maximum weight capacity: 127kg**
- **DO NOT** hang anything from the walking frame other than the basket included. The basket has a weight limitation of 8kg
- **DO NOT** use the walking frame to pull-up on. The walking frame is not a transfer aid
- Instruction and practice are necessary for successful use of the walking frame
- Ensure handbrakes are fully operational before each use
- **DO NOT** use the walking frame until the handles are properly adjusted and securely tightened
- Ensure left and right handles are level to avoid instability problems.
- Always lock brakes when using the walking frame seat
- The walking frame is only to be used **INDOORS** on level, firm surfaces
- Use the walking frame only for the purpose it is intended for
- **DO NOT** stand on the walking frame
- **DO NOT** sit on the seat for long periods. (It is designed as a limited seating function for temporary rest)
- **DO NOT** use the walking frame as a wheelchair; doing so may cause a tip over, resulting in injury



- Note that a shift of balance due to body movements may increase the risk of the walking frame tipping over. Always make sure the load on the walking frame is even
- Surface temperatures of the walking frame can increase/decrease when exposed to external sources of heat (e.g., sunlight, outdoor environment)



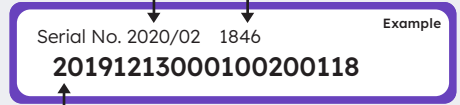
WARNING! BEFORE USE make sure the handle height adjustment knobs are tight and the folding lock is firmly down. Check brakes are working correctly.

Product specifications

Description	Super Stroller®
Code	1846
Safe working load	
Frame	127kg
Basket	8kg
Approximate frame weight	7kg
Adjustable handle height	840mm - 950mm
Seat height	550mm
Seat size	300mm x 300mm
Overall width	600mm
Inside width	440mm
Folded depth	320mm
Usage	Indoor use only

Product labels

- Date of manufacture
- Model number

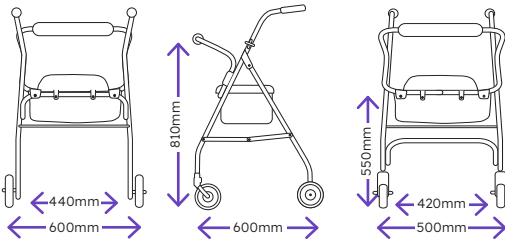


- Serial number

- Model name and number
- Refer to instructions for use



- Indoor use only
- Maximum safe working load
- Total width of walking frame

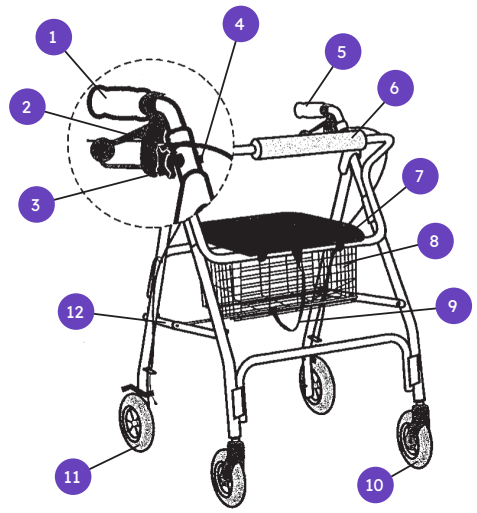


WARNING! All labels must remain readable. Immediately replace unreadable or missing labels. The serial number label is very important for identifying the product. It may not be removed.

List of components

The Super Stroller® walking frames are supplied in boxes and come folded for easy transportation. The contents include one complete Super Stroller folded, one basket and one user guide.

- | | |
|--------------------|-----------------|
| 1. Right handle | 7. Seat |
| 2. Brake handle | 8. Basket |
| 3. tar handle bolt | 9. Nylon rope |
| 4. ADJ .nut | 10. Front wheel |
| 5. Left handle | 11. Rear wheel |
| 6. Rubber pad | 12. Centre bar |



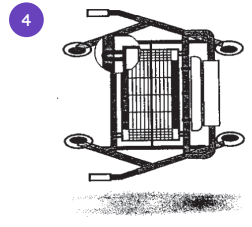
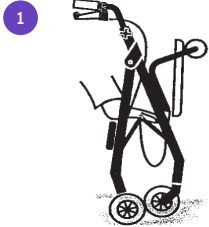
Instructions for use

Setting up/unfolding the walking frame

1. Push down on the centre bar until frame opens
2. Put the basket in place
3. Fold down the seat
4. Ensure the walking frame is fully open

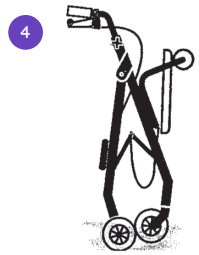
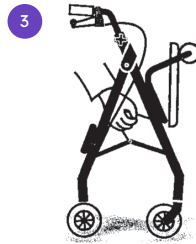


CAUTION! Beware of pinch points. Take care not to trap your hands, fingers or clothing when adjusting any of the walking frame functions.



How to fold

1. Lift the seat
2. Remove the basket
3. Pull on the nylon rope up
4. Fold the frame



Install backrest

- Insert backrest into frame until the snap buttons engage. Ensure backrest is securely fastened

Selecting the appropriate height



WARNING! Seek advice from a qualified health professional for the appropriate height to suit your needs.

It is important to set the walking frame to the correct height therefore it is always best to seek guidance from your Health Care Professional for the appropriate height level to suit your needs.

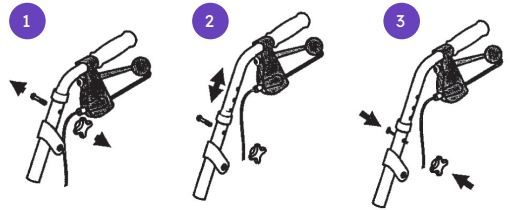
When the frame height is correct the user should be able to maintain an upright posture with the elbow slightly flexed. In this way, body weight is taken through the frame by pushing down on the frame when walking.

The general guide is:

1. Stand with your arms relaxed at your side.
2. The top of the walking frame handle should be aligned with the wrist. (You can also align with the hip joint area but the wrist measurement is more often correct.)
3. The user should not have their shoulders raised or dropped when using the walking frame

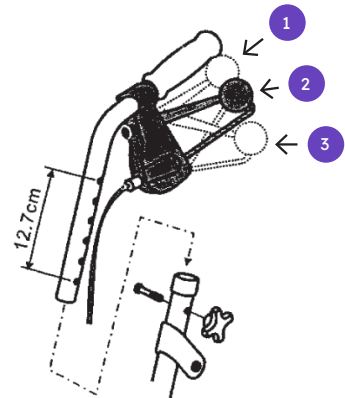
Handle Adjustment

1. Remove adjustment knob and bolt from both handles (1)
2. Insert handles into walking frame (2)
3. Position the handle to the appropriate height
4. Insert the bolt through the frame, handle and plastic washer (3)
5. Ensure before tightening that the hexagonal bolt head is into the hexagonal hole in the frame
6. Tighten knob so handles are firm



Using the Hand Brakes

1. To operate the brake pull upwards on the handbrake lever (1)
2. When using the walking frame to move forward, the handbrake lever will remain in (2)
3. To lock the handbrake, push down on the handbrake lever until it “clicks” into the lock position (2) to (3)
4. To unlock the handbrake, pull up on the handbrake lever from (3) to (2)



Brake tension adjustment

1. To adjust cable at the handbrake handle, loosen lock nut and turn cable adjuster in to loosen the brake or out to tighten the brake
2. Bottom cable adjustment (above wheel)- turn nut towards brake to tighten or turn nut upwards to loosen brake



WARNING! When using the walking frame in a stationary position, the handbrakes **MUST** always be locked.

Care and maintenance

Cleaning

- Clean the walking frame regularly with a damp cloth.
- Use a mild washing agent and warm water for excess dirt build up.
- Do not use harsh abrasives or bleach based agents which may cause damage or discolouration.

Wheels

- Clean wheels with a mild washing agent and warm water.
- Lubricate with multi-purpose oil periodically or if wheels begin to squeak.

Maintenance

- Ensure that every part of the walking frame is secure at all times.
- Check all screws for tightness. If not, tighten if necessary.
- Replace any broken, damaged or worn items immediately.

Disposal

Products that can no longer be used are to be disposed of separately from household rubbish. This must be done according to the local and national regulations for environmental protection and raw material recycling. Please look at your local council's website for further information on the correct disposal.

Maintenance schedule

Weekly	Periodically	Yearly	Serviceable Components
<ul style="list-style-type: none">• Check brake function• Check all wheels, nuts and bolts are secure	<ul style="list-style-type: none">• Check handgrips for wear• Check folding hinge bolts are secure• Check front and rear axle bolts are secure• Check frame for wear or cracks• Check wheels for damage or splitting• Check seat for wear and cracks. Ensure it is secured correctly to the frame	<ul style="list-style-type: none">• Take the walking frame to an authorised dealer for a full check, clean and service.	<ul style="list-style-type: none">• Hand grips• Wheels• Brake cables• Seat• Brake handles• Bearings• Nuts and bolts



WARNING! If faults are found during any inspection remove from use immediately.



WARNING! Do not make any changes or modifications to this product without consultation from Cubro

For options, accessories or parts please visit our website or contact us.

For additional copies of this user guide or for a different format, please contact Cubro®.

Limited warranty

Cubro Ltd warrants the product to be free from defects in materials and workmanship from the date of purchase for a period of 1 year (12 months). Please refer to cubro.co.nz for terms and conditions.

© Copyright 2023 Cubro® Ltd

ALL RIGHTS RESERVED: No part of this publication shall be adapted, modified, reproduced, copied, or transmitted in any form or by any means including written electronic, mechanical, reprographic, photocopying, or recording means. Furthermore, this publication shall not be stored in whole, part, adapted, or modified form, in or for any retrieval system of any nature without the written permission of the copyright holder. Applications for authorisation of a reserved right of copyright owner shall be made in writing to the publisher. WARNING: The doing of any unauthorised act in relation to a copyright work may result in both a civil claim for damages and criminal prosecution.

17/02/23

Get in touch & connect   

Email sales@cubro.co.nz • Call us 0800 656 527 • Visit cubro.co.nz

Cubro[®]